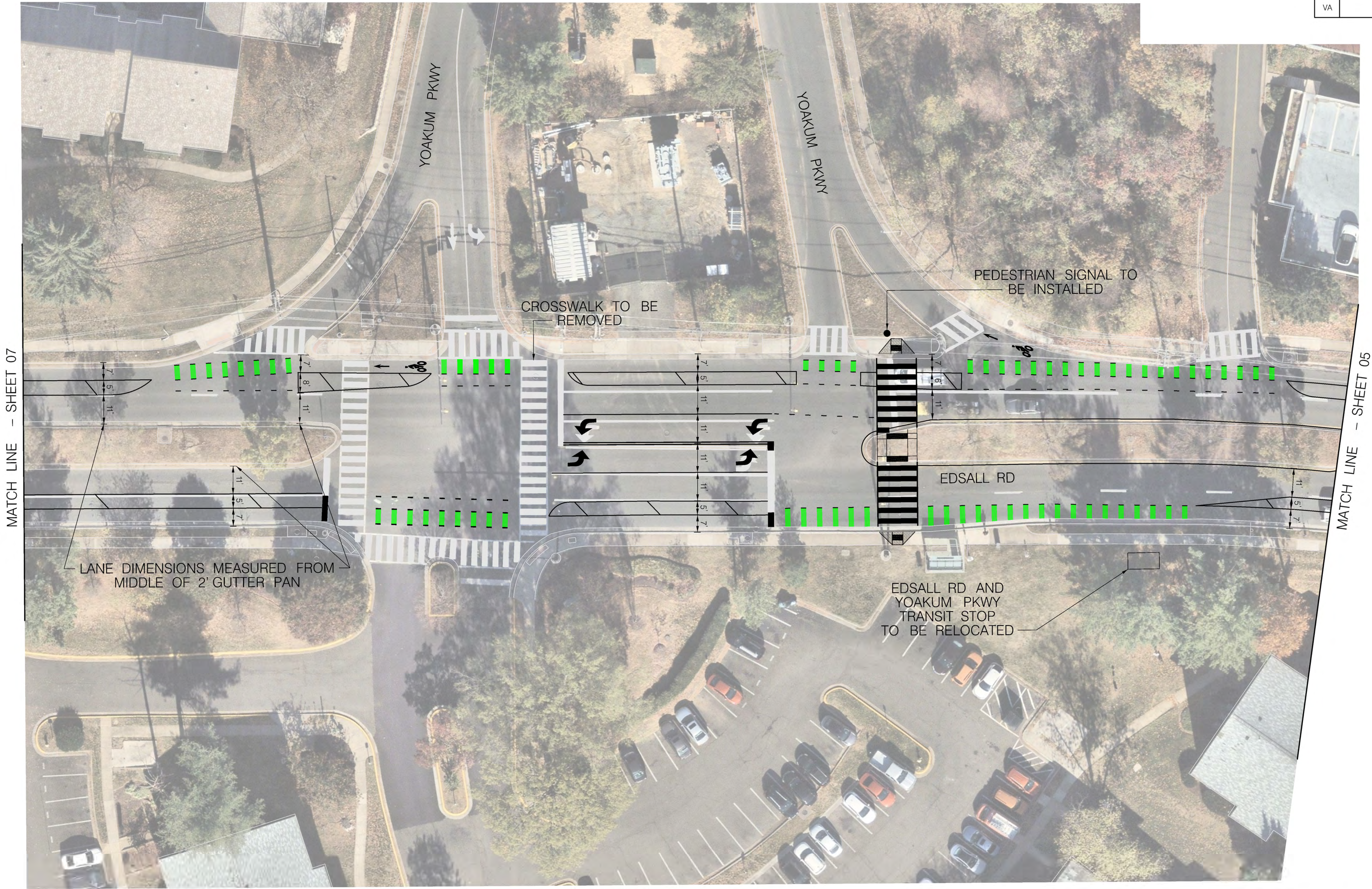
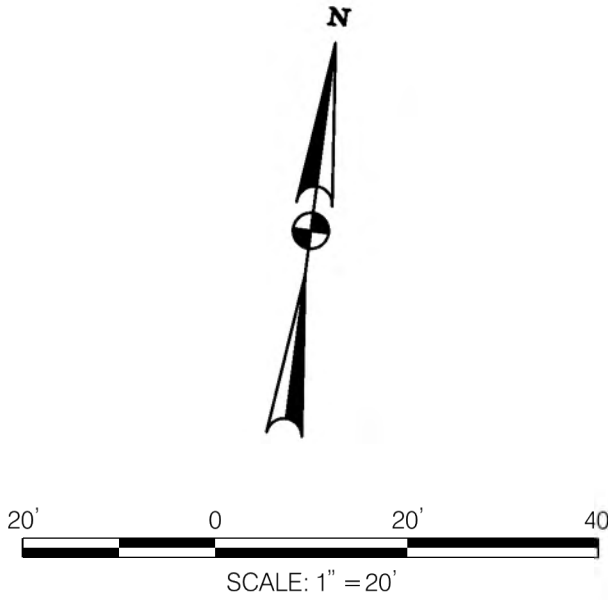


STATE	CONTRACT NO.	SHEET NO.	TOTAL SHEETS
VA		1	1



NOTES:

1. TRANSITION FROM BIKE FACILITIES ON EDSALL RD TO BIKE FACILITIES ON YOAKUM PKWY WILL DEPEND ON THE PREFERRED ALTERNATIVE FOR YOAKUM PKWY CORRIDOR PROJECT
2. UNDER THIS CONCEPT, NORTHBOUND BICYCLISTS WILL NEED TO USE THE CROSSWALK ACROSS EDSALL RD TO ACCESS BIKE LANES ON YOAKUM PKWY



NO	DESCRIPTION	NAME	DATE
REVISIONS			

METROPOLITAN WASHINGTON COUNCIL OF GOVERNMENTS TRANSPORTATION LAND-USE CONNECTIONS PROGRAM	
EDSALL ROAD CORRIDOR STUDY	PROJECT ENG. SN DESIGNED BY CJH CHECKED BY SN DRAWN BY CJH PROJECT MGR SN
YOAKUM PARKWAY CROSSWALK RELOCATION CONCEPT	DIVISION CHIEF DATE April 03, 2025 FILE 100-101700-00000000 SHEET 1 OF 1